

中低速多刀机边粉碎机

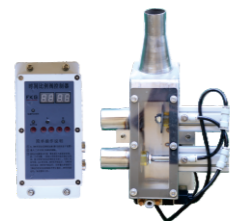
MEDIUM AND LOW SPEED MULTI-KNIFE EDGE GRINDER



粉碎效果 Crushing effect



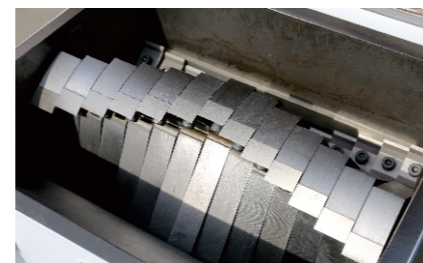
旋风回收系统
Cyclone recovery system



两料比例阀回收系统
Two material proportioning valve recovery system



离尘回收系统
Dust recovery system



SKD-11小爪刀
SKD-11 cutlery

性能特点 >>

- 低转速、低噪音,低粉尘
- 采用品牌减速电机, 低噪音、高效稳定, 持久耐用。
- 电机驱动方式采用直联式或变频电机驱动, 比传统驱动方式更稳定、更可靠。
- 采用SKD-11材质刀具和铸钢刀架结构, 坚固耐用
- 采用精心设计的“凹型”刀具,使在重磨后仍保持固定的切割曲线和切割间隔, 无需进行复杂调整, 使拆装刀具更快捷, 大大延长机器使用寿命。静刀可反复使用4次后再行重磨。
- 采用牢固精良的转子装置和V型阶梯排列具, 大大增强了切扭矩和能力, 提高了破碎产量, 提升了破碎效率
- 采用双层减震材质, 内置隔音夹层, 降低音, 改善环境
- 采用活动式筛网, 拆装方便,易于清洁、换色和维护。
- 采用快捷型的机式, 拆卸更简易, 安装、操作、清理、维护更方便。
- 欧化设计, 钢结构箱体, 用料扎实, 美观坚固。
- 高效粉碎回收, 提高生产效率。底部自带吸料口, 可直接与吸料机连接进行立即回收。选配两料比例阀后, 可控制次料按定比例进行输送, 达到比例式混料输送作用。

- Low speed, low noise, low dust
- Taiwan brand reducer motor, low noise, high efficiency and stability, durable
- The motor drive mode is driven by the direct-coupled gear motor, which is more stable and reliable than the traditional drive mode
- SKD-11 material and tool steel cutter structure, durable
- Using well-designed "concave" tool, so that it remains in the grinding after a fixed cutting curve and cutting interval, without the need for complex adjustments so that more efficient tool disassembly, greatly extending the service life of the machine. Static knife can be re-used 4 times after re-grinding
- The use of strong rotor device and V-type ladder arrangement of cutting tools greatly enhanced the cutting torque and ability to improve the crushing yield enhance the crushing efficiency
- Double-damping material, built-in sound insulation sandwich, reduce noise, improve the environment
- The use of mobile screen, easy disassembly, easy to clean, change color and maintenance
- The quick disassembly mode, disassembly easier, installation, operation, cleaning maintenance more convenient
- European design, steel box, solid materials, beautiful and strong
- Efficient crushing recovery, improve production efficiency. Bottom comes with suction mouth can be directly connected with the suction machine for immediate recovery. optional two material proportional valve, the new material can be controlled according to a certain proportion of conveying to achieve the proportion of mixed transport function

技术参数 TECHNICAL PARAMETER

型号 Model	中低速8刀 8 Blades	中低速10刀 10Blase	中低速13刀 13Blades	中低速15刀 15Blades
电压 Voltage	3phase三相/380V 50HZ			
功率 (KW) Power	2.2KW	2.2KW	3.7KW	3.7KW
粉碎口径 Crushing chamber	236*270mm	270*290mm	370*300mm	270*430mm
动刀 Rotary blade	8把*3=24把	10把*3=30把	13把*3=39把	15把*3=45把
刀具材质 Blade material	SKD-11	SKD-11	SKD-11	SKD-11
转速 Speed	约143r/min	约143r/min	约143r/min	约143r/min
筛网 Screen	标准(standard)6MM	标准(standard)6MM	标准(standard)6MM	标准(standard)6MM
外形尺寸 Dimension	860*460*1250mm	960*460*1250mm	1180*500*1460mm	1350*726*1350mm
重量 Weight	185KG	200KG	280KG	230KG

产品规格参数如有变动, 恕不另行通知。
Specifications are subject to change without notice.